



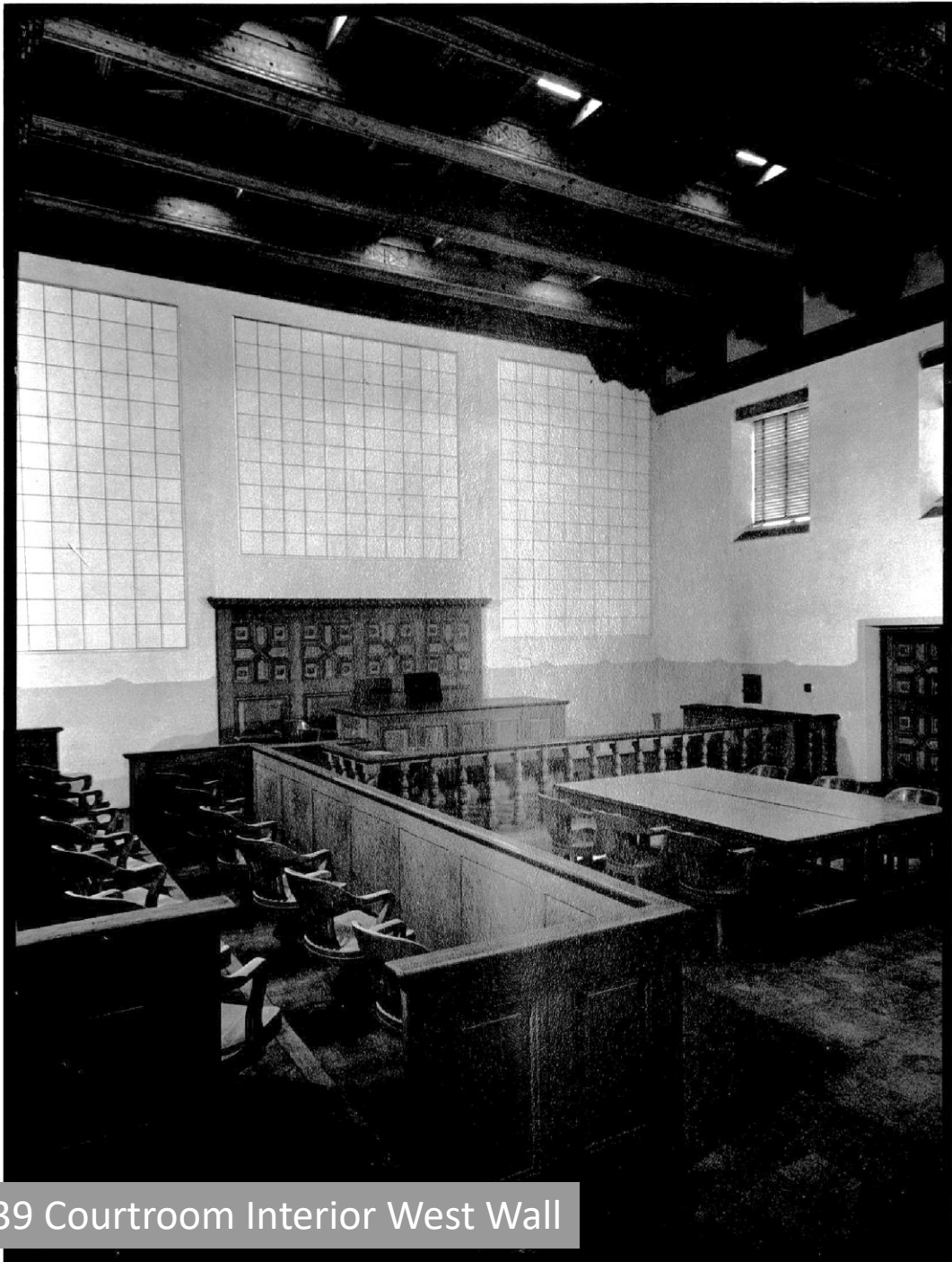
STUDIO SOUTHWEST
ARCHITECTS

Santa Fe County Admin – 102 Grant Ave

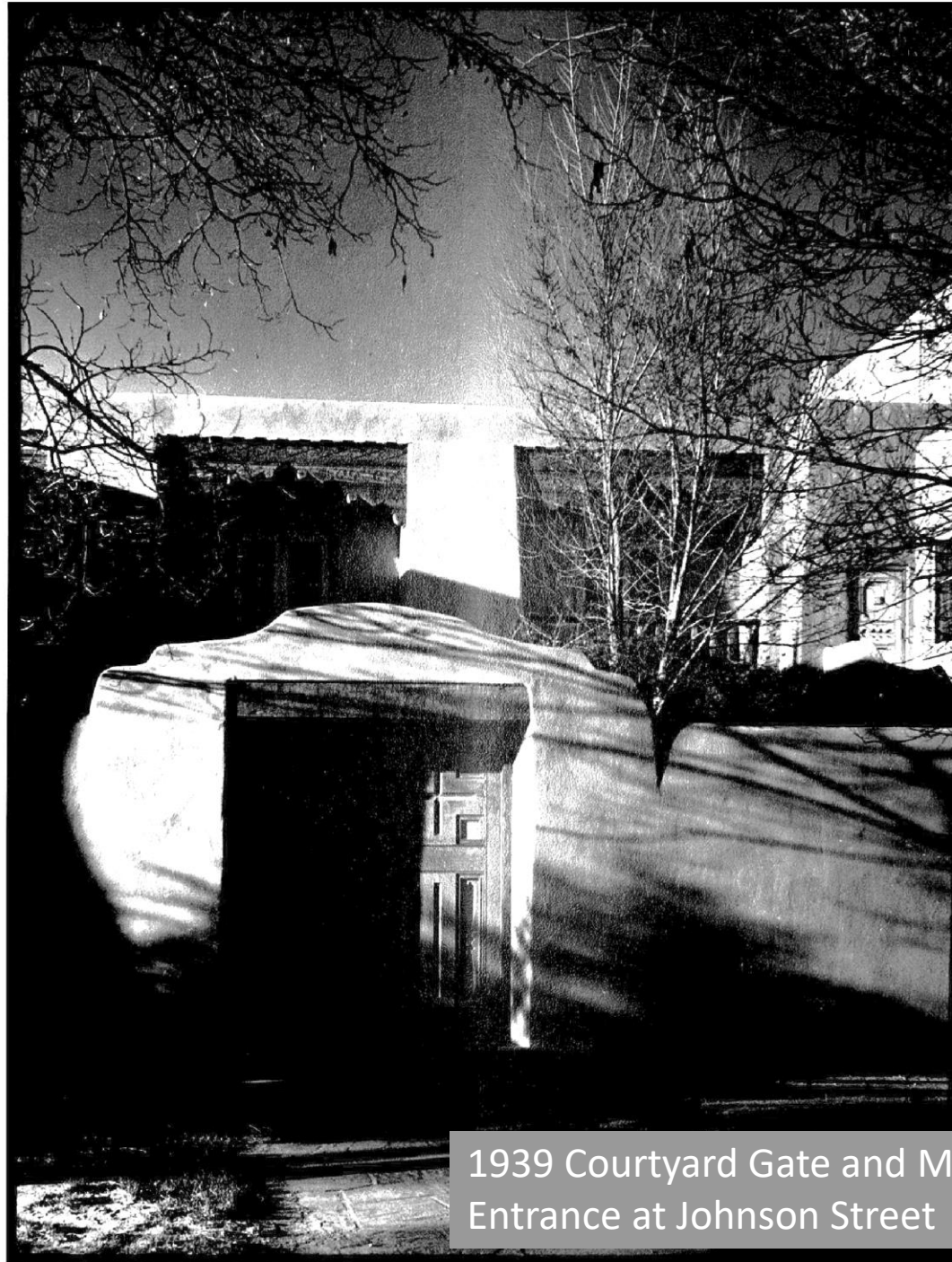
Historic Review Board Presentation



1939 East Facade



1939 Courtroom Interior West Wall



1939 Courtyard Gate and Main Entrance at Johnson Street



1976-1977 NE Corner at Grant and Johnson



1979 East Facade



1979 SE Corner at Grant and Sandoval and Palace Street



1977 West Facade at Johnson Street



1979 2-Story Courtyard Infill at Johnson Street



GRANT AVE



Early Voting at this site is held Monday through Friday 8:00am to 5:00pm.

Saturday November 28th is the only Saturday that early voting will be held at this site. The Clerk's Office will be closed Monday October 14th in observance of Columbus Day.

NO SMOKING

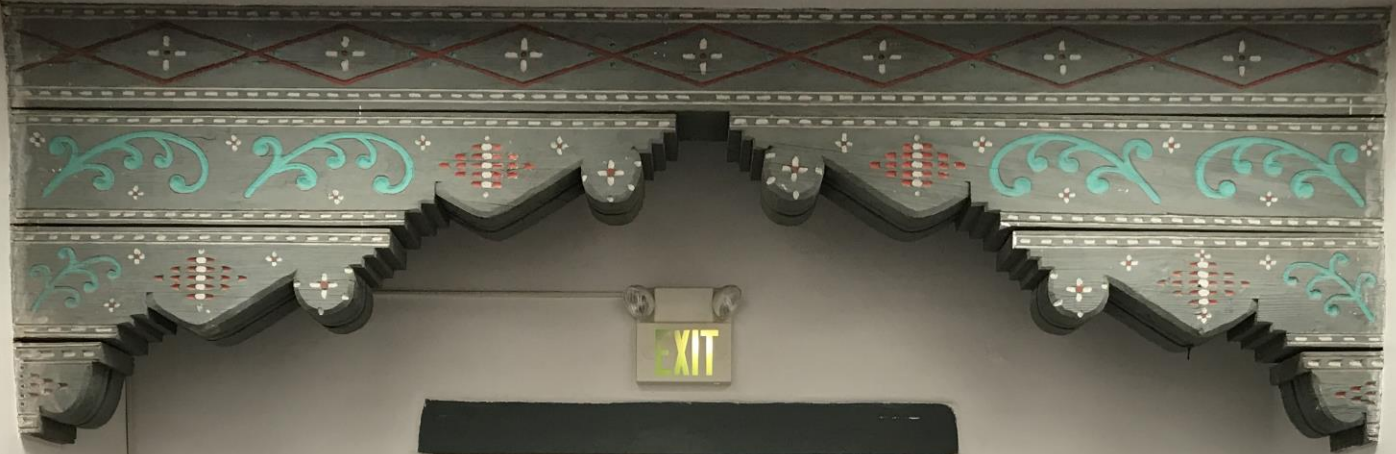












EXIT



The Historical Commission of
100 Arch Street, 100 Easton
25













SITE PLAN

- New color sidewalks – brick paving under east portal
- New stucco finished screen walls at existing electrical transformers
- New landscaping - preserving some existing trees and plants – street trees
- New parking lot paving, curbs & lighting with EV charging spaces & HCP spaces
- Restored courtyard & north enclosure wall with landscaping

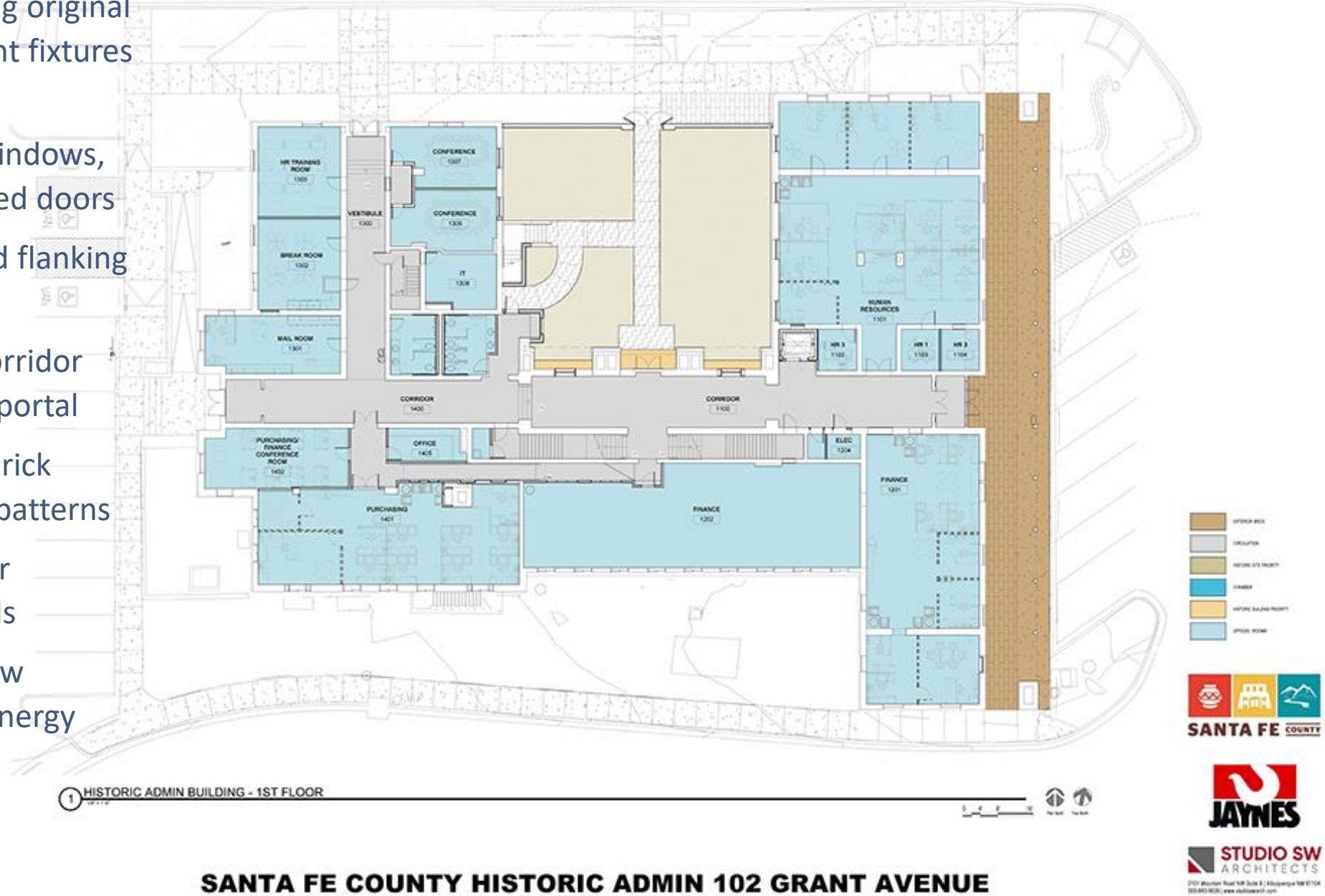


SANTA FE COUNTY HISTORIC ADMIN 102 GRANT AVENUE



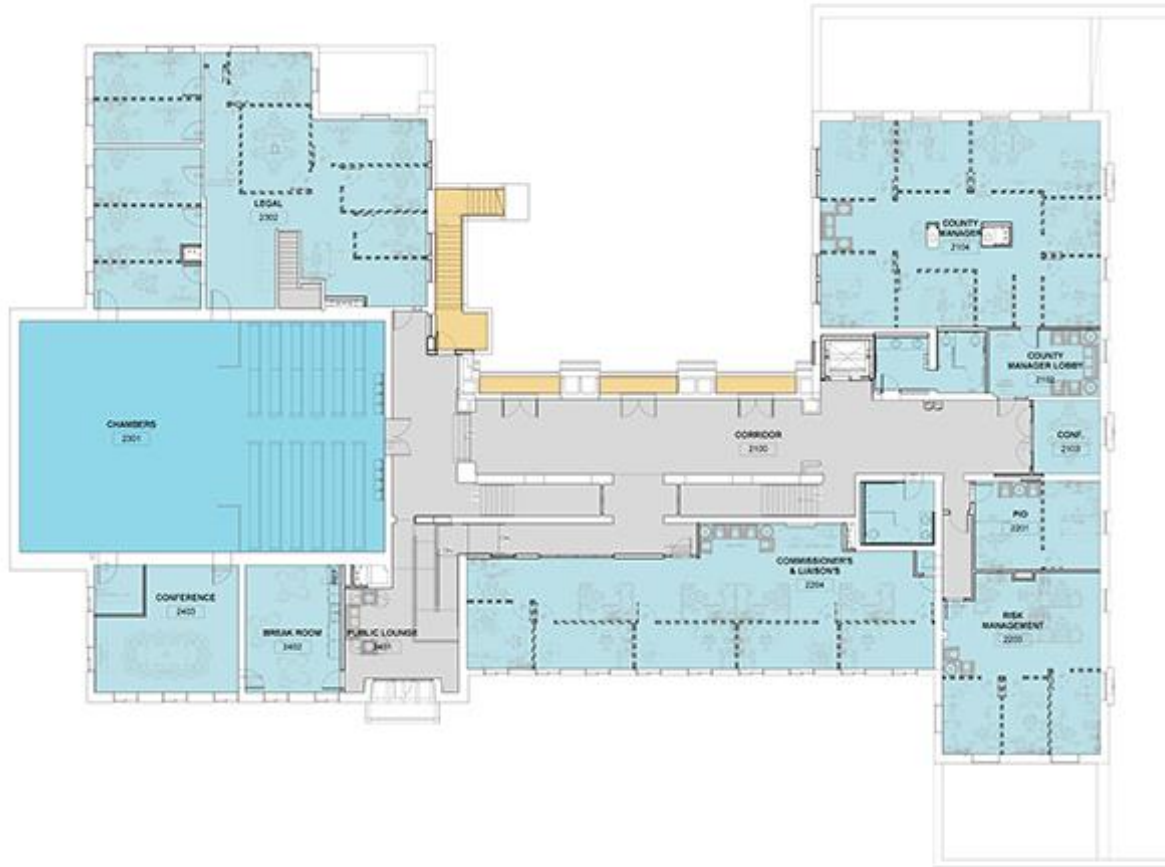
FIRST FLOOR PLAN

- Preserved corridors including original doors and decorative tin light fixtures – restore painted wainscot
- Restored courtyard walls, windows, and preserving original glazed doors
- Restoring exterior porch and flanking banco's
- New elevator adjacent to corridor and main entrance via east portal
- Restoring original corridor brick paving exposing colors and patterns
- Providing accessible corridor between stepped floor levels
- Rehab office spaces with new finishes & code compliant energy saving MEP systems
- New fire alarms system and door access control

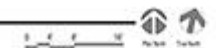


SECOND FLOOR PLAN

- Preserved corridors including original doors and decorative tin light fixtures – restore painted wainscot
- Restored courtyard walls with balconies and glazed balcony doors
- Providing accessible corridor with ramp between stepped floor levels
- Preserving commissioners chamber – restore adjusting existing benching for ADA access
- Restoring required egress stair to courtyard with ADA area of refuge
- Adding complementary supplemental tin fixtures enhancing egress lighting
- Rehab office spaces with new finishes & code compliant energy saving MEP systems
- Preserving original judge's office and library at legal suite



1 HISTORIC ADMIN BUILDING - 2ND FLOOR

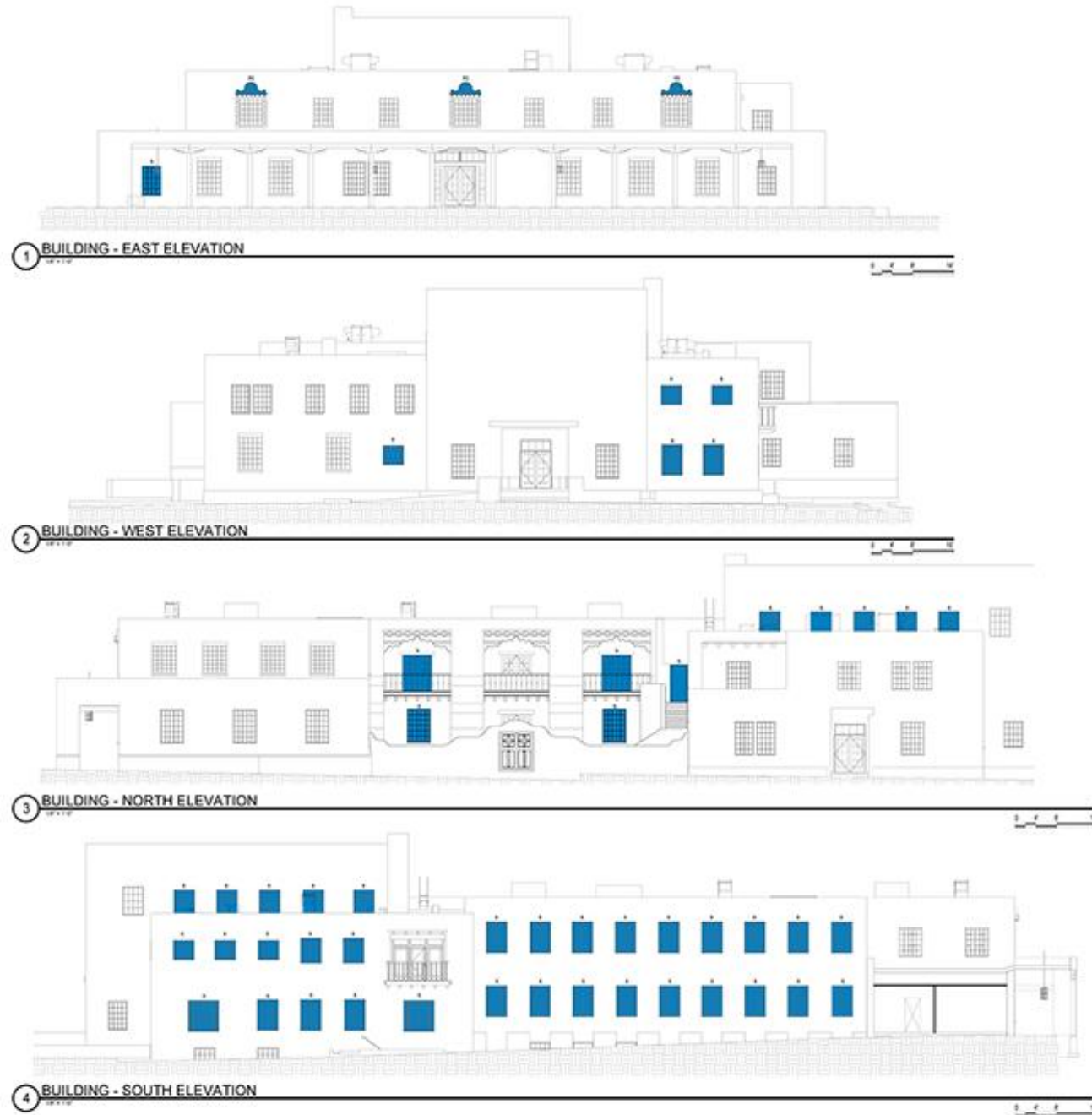


SANTA FE COUNTY HISTORIC ADMIN 102 GRANT AVENUE



EXTERIOR BUILDING ELEVATIONS

- Preserving exterior massing, original features and details
- New cementitious stucco finish matching original stucco color
- **East elevation** restoring 3 decorative wood 2nd floor window header crowns and original window under portal at altered opening with exterior door – retain painted white walls & wainscot below portal
- **West elevation** replacing altered steel windows with new replica windows
- **North elevation** replacing altered steel clerestory windows at 2nd floor chamber with new replica windows and restoring the original courtyard site enclosure wall
- **South elevation** replacing numerous altered steel windows with new replica windows

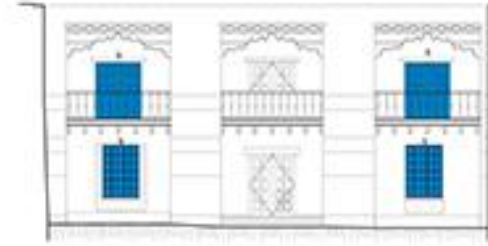


SANTA FE COUNTY HISTORIC ADMIN 102 GRANT AVENUE

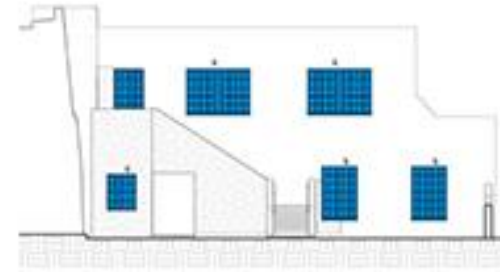


EXTERIOR RESTORED COURTYARD BUILDING ELEVATIONS

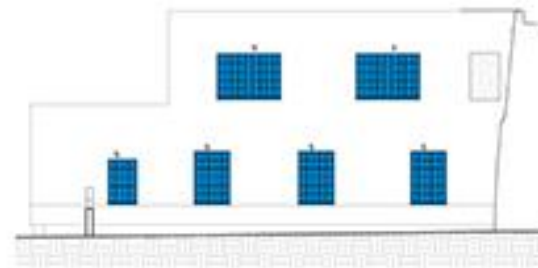
- **1st floor north facing elevation** – restored (possibly preserved tbd) porch with original courtyard entrance doors and restored flanking bancos; original window openings with replica wood hung windows; parapets
- **2nd floor north facing elevation** - restored balconies & railings; glazed balcony doors flanking preserved center balcony doors. Preserved decorative beams with stacked corbels & buttresses; restored parapets
- **East facing elevation** - restored 2nd floor egress stair with accessible door to 1st floor below; original window openings with replica wood hung windows; parapets
- **West facing elevation** – restored original window openings with replica wood hung windows; parapets



1 COURTYARD - NORTH ELEVATION



2 COURTYARD - EAST ELEVATION



3 COURTYARD - WEST ELEVATION

